



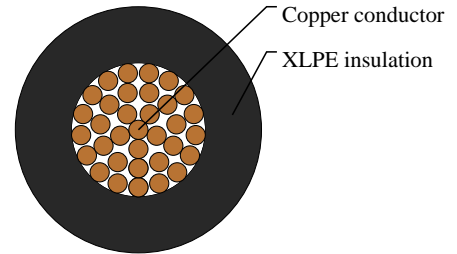
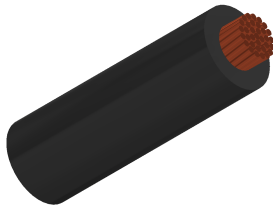
# Caledonian

Automotive Cables

www.caledonian-cables.com

marketing@caledonian-cables.com

## AEXHF 1C0.85



### APPLICATIONS

This XLPE insulated single-core cable is used in low voltage circuits in automobiles(vehicles and motorcycles), Superior heat resistance with irradiated PE superior more than thermal resistance AEX type.

### STANDARDS

ES SPEC

### CABLE CONSTRUCTION

Conductor: Tin coated annealed stranded copper.

Insulation: Cross-linked Polyethylene (XLPE)

Standard Compliance: ES SPEC

### PHYSICAL AND THERMAL PROPERTIES

Operating temperature: -40 °C to +150°C

Rated voltage up to 60V

### DIMENSION AND PARAMETERS

No. of Cores × Cross-sectional Area	No. and Dia. of Wires	Diameter of Conductor (max.)	Nominal Insulation Thickness	Overall Diameter (min.)	Overall Diameter (max.)	Approx. Weight	Electrical Resistance at 20°C (max.)
No. × mm <sup>2</sup>	no./mm	mm	mm	mm	mm	kg/km	MΩ/m
1x0.85	34/0.18	1.2	0.5	2.2	2.3	12	21.6